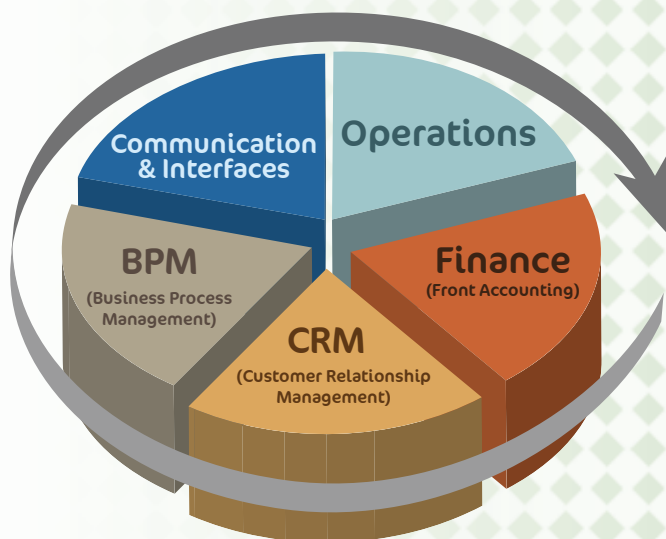


# Unifreight ERP

Unifreight is a sophisticated ERP system for international trade that integrates data and processes from all areas of an organization into one central system. The different modules of the system use one unified database to serve a wide range of business functions, so that the various departments can easily access and share information, and communicate with each other.

Unifreight's comprehensive suite of ERP solutions encompasses all the facets of the Freight Forwarding, Shipping Agency, Airline Cargo GSA and Customs Brokerage industries.



## Operations

Unifreight provides operational tools to manage all the tasks involved in the processing of a shipment, and control the flow of goods and information throughout the international supply chain.

- Tracking & tracing at every stage of the execution chain from order to final delivery
- Authoring of business process workflows, per customer and per shipment type
- Production of all required documents
- Handling of customers, vendors, and other business partners
- Operational relations with logistics partners

## Customer Relationship Management - CRM

Unifreight's CRM tools enable organizations to build business processes and devise CRM methodologies that are focused on better serving customers. With Unifreight, logistics providers can implement a company-wide customer-centric business strategy to solidify customer loyalty.

- Management of sales data and conversion to sales activity
- Sales quotations based on tariffs
- Shipment pricing based on sales quotations
- Tools to manage the entire sales cycle: telephone conversations, meetings, alerts, reminders, follow-up calls
- Customer knowledgebase
- Contact management and rule-based generation of contact lists
- Targeted distribution and circulation lists for reporting
- Automatic generation of frequently-needed reports and report distribution
- Tracking of customer commitment and potential, and prioritization
- Analysis of customer behavior to aid decision making
- Sales force information for managers
- Management of customer complaints and requests



ERP for International Trade

## Billing & Front Accounting

Unifreight offers a variety of front accounting features including automatic invoicing based on tariffs and agreements, and reconciliation with logistics partners to reduce time spent on recording and auditing invoices.

- Multiple billing and multiple currency
- Real-time profit and loss
- Cost tracking
- Payable entry
- Profit share calculation
- Airline and trucker statement validation
- Agent payment balance and reconciliation
- Accounting closure
- Built-in interfaces to SAP SBO and other back-office accounting systems

## Business Process Management - BPM

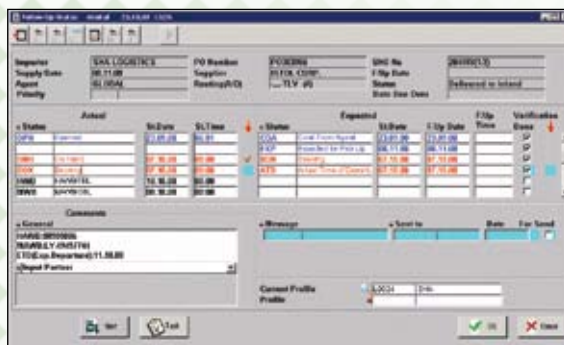
Unifreight's integrated BPM functionality helps define, automate and monitor business processes, so that organizations can improve and standardize functions across the company, and employees can execute their tasks effectively.

- **Event Management** engine for keeping track of all activities occurring in the system
- **Results** engine that automatically executes rules based on trigger events and logical definitions, for Exception Handling, for running the Alerts mechanism, and for operating Unassisted Customer Service
- **Follow-Up** engine designed to control the processing workflow of Unifreight entities, shipments, orders, containers, and others - based on status and profile definitions
- **Instructions** tool for preparing texts that contain instructions, explanations, notifications, alerts, or other information to be displayed to users while working with pre-selected components throughout the system
- **Task Management:** Automatically or user generated, entity-related jobs that users are expected to track through completion
- **Statistics and KPIs** that facilitate informed decision-making

## Communication & Interfaces

Unifreight provides the infrastructure for business-to-business communication between trading partners, and business-to-consumer communication between trading partners and their customers.

- Built-in interface to Traxon for status updates from airlines
- Exchange of status and operational data between Unifreight and customers' systems
- Interfaces to airlines and shipping lines for real-time updates
- Data transmission over the Internet, private lines or FTP, or via e-mail and other channels
- Support of all data file formats: flat file, EDI, XML or a private layout
- Automatic messaging mechanism
- Queries for tracing, monitoring and analyzing all outbound and inbound data transmissions



## Document Management System

The Document Management system is designed to handle and manage unstructured information such as electronic mail, fax messages, and Office Automation documents. The use of MS Outlook, Excel and Word is integrated within Unifreight Document Management, creating a homogenous user environment where operational activities and office functions complement each other.

- Filing of e-mail messages
- Automatic transmission of documents to customers
- Automatic entry and filing of operational documents from business partners
- Document scanning

## Unifreight Product Family

The Unifreight family of products includes ERP solutions for the Freight Forwarding, Shipping Agency, Airline Cargo GSA and Customs Brokerage industries.

[www.unifreight.com](http://www.unifreight.com)